

SUNCOR STAINLESS, INC.

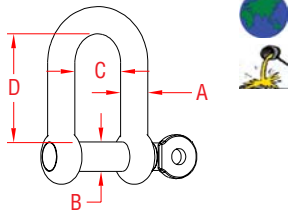
SHACKLES



STRAIGHT D SHACKLE



316 STAINLESS STEEL WITH SCREW PIN

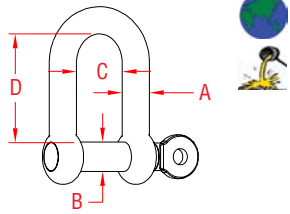


ITEM	A	B	C	D	WLL	WT
	(size)				(lb)	(lb)
S0115-0004	5/32"	0.15"	0.31"	0.55"	200	0.02
S0115-0005	3/16"	0.19"	0.45"	0.76"	500	0.04
S0115-0006	1/4"	0.23"	0.48"	0.85"	750	0.06
S0115-0008	5/16"	0.31"	0.67"	1.11"	1,000	0.14
S0115-0010	3/8"	0.39"	0.78"	1.37"	1,200	0.25
S0115-0012	15/32"	0.46"	0.95"	1.66"	1,500	0.43
S0115-0013	1/2"	0.54"	1.09"	1.84"	2,500	0.66
S0115-0016	5/8"	0.61"	1.25"	2.01"	3,000	0.90
S0115-0020	3/4"	0.74"	1.46"	2.57"	4,000	1.62
S0115-0022	7/8"	0.86"	1.60"	2.92"	5,000	2.49
S0115-0025	1"	0.96"	1.95"	3.45"	6,000	3.63
S0115-0032	1-1/4"	1.25"	2.50"	4.35"	9,000	7.42

STRAIGHT D SHACKLE



316 STAINLESS STEEL WITH CAPTIVE PIN



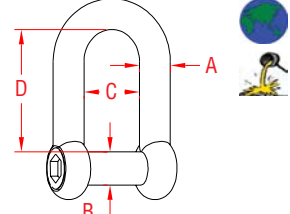
ITEM	A	B	C	D	WLL	WT
	(size)				(lb)	(lb)
S0115-CP04	5/32"	0.17"	0.32"	0.55"	200	0.02
S0115-CP05	3/16"	0.19"	0.37"	0.69"	500	0.03
S0115-CP06	1/4"	0.23"	0.47"	0.82"	750	0.05
S0115-CP08	5/16"	0.31"	0.62"	1.10"	1,000	0.12
S0115-CP10	3/8"	0.39"	0.79"	1.34"	1,200	0.23
S0115-CP12	1/2"	0.47"	0.95"	1.65"	1,500	0.38

NOTE:
SCREW PIN IS CAPTIVE AND NOT REMOVABLE. WHEN IT'S FULLY OPENED, THE END OF THE PIN WILL SIT FLUSH WITH THE INSIDE OF THE SHACKLE.

STRAIGHT D SHACKLE



316 STAINLESS STEEL WITH NO SNAG PIN



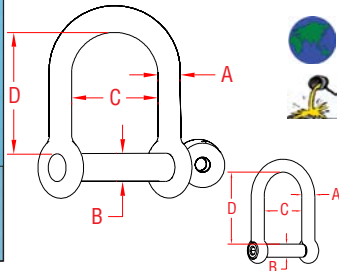
ITEM	A	B	C	D	WLL	WT
	(size)				(lb)	(lb)
S0115-NS06	1/4"	0.23"	0.48"	0.85"	750	0.05
S0115-NS08	5/16"	0.31"	0.67"	1.11"	1,000	0.13
S0115-NS10	3/8"	0.39"	0.79"	1.38"	1,200	0.24
S0115-NS12	15/32"	0.47"	0.93"	1.64"	1,500	0.41
S0115-NS13	1/2"	0.54"	1.09"	1.84"	2,500	0.64
S0115-NS16	5/8"	0.64"	1.27"	2.19"	3,000	0.94
S0115-NS20	3/4"	0.75"	1.50"	2.60"	4,000	1.55
S0115-NS22	7/8"	0.87"	1.73"	3.01"	5,000	2.44
S0115-NS25	1"	0.98"	1.94"	3.42"	6,000	3.56

NOTE:
NO SNAG PIN SITS FLUSH WITH BODY OF SHACKLE. LARGER SIZES WITH SLOTTED HEAD. SUNCOR RECOMMENDS THE USE OF A LOCKING FLUID WITH THIS TYPE OF SHACKLE.

WIDE D SHACKLE



316 STAINLESS STEEL

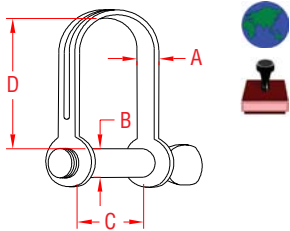


ITEM	A	B	C	D	WLL	WT
	(size)				(lb)	(lb)
SCREW PIN						
S0114-0006	1/4"	0.24"	0.92"	1.31"	750	0.08
S0114-0008	5/16"	0.32"	1.11"	1.22"	1,000	0.14
S0114-0010	3/8"	0.40"	1.54"	2.14"	1,200	0.33
S0114-0012	1/2"	0.47"	1.89"	2.59"	1,500	0.56
NO SNAG PIN						
S0114-NS06	1/4"	0.24"	0.92"	1.31"	750	0.08
S0114-NS08	5/16"	0.32"	1.11"	1.22"	1,000	0.14
S0114-NS10	3/8"	0.40"	1.54"	2.14"	1,200	0.33
S0114-NS12	1/2"	0.47"	1.89"	2.59"	1,500	0.56

STAMPED D SHACKLE



304 STAINLESS STEEL WITH SCREW PIN



ITEM	A	B	C	D	WLL	WT
	(size)				(lb)	(lb)
S0118-0004	5/32"	0.16"	0.40"	0.59"	200	0.01
S0118-0005	3/16"	0.20"	0.40"	0.76"	250	0.02
S0118-0006	1/4"	0.24"	0.54"	0.95"	300	0.03
S0118-0008	5/16"	0.32"	0.71"	1.53"	450	0.07



Key:



Made in USA



Drop Forged



Precision Machined



Wire Formed



Suncor Exclusive



Import



Precision Cast



Stamped



Load Rated



NEW Product

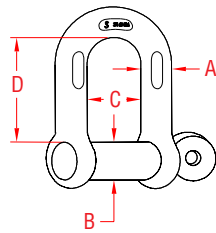
ORDERS ONLY: 800-394-2222 (USA)
877-495-5510 (CANADA)

All logos, icons, images, measurements and descriptions are the sole property of Suncor Stainless, Inc.
© 2013 Suncor Stainless, Inc.

CHAIN SHACKLE



316-NM STAINLESS STEEL WITH OVERSIZE SCREW PIN



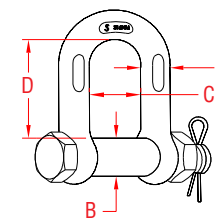
ITEM	A	B	C	D	WLL	WT
	(size)				(lb)	(lb)
S0115-FS07	1/4"	0.31"	0.46"	0.87"	1,000	0.09
S0115-FS08	5/16"	0.38"	0.52"	1.02"	1,300	0.16
S0115-FS10	3/8"	0.44"	0.65"	1.24"	1,500	0.28
S0115-FS12	7/16"	0.50"	0.75"	1.43"	2,000	0.43
S0115-FS13	1/2"	0.63"	0.79"	1.58"	3,000	0.70
S0115-FS16	5/8"	0.75"	1.05"	1.94"	4,000	1.70
S0115-FS20	3/4"	0.88"	1.20"	2.40"	6,000	2.13
S0115-FS22	7/8"	1.00"	1.45"	2.88"	8,000	3.22
S0115-FS25	1"	1.13"	1.67"	3.20"	10,000	4.77

NOTE:
1/A/W FED. SPECIFICATION RR-C-271D, TYPE IVB, CLASS 2, (EXCEPT 316 STAINLESS STEEL). MARKED TO THE NEAREST FRACTIONAL TON.

BOLT CHAIN SHACKLE



316-NM STAINLESS STEEL WITH OVERSIZE BOLT



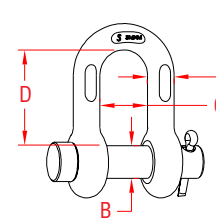
ITEM	A	B	C	D	WLL	WT
	(size)				(lb)	(lb)
S0115-SA07	1/4"	0.31"	0.46"	0.87"	1,000	0.11
S0115-SA08	5/16"	0.38"	0.52"	1.02"	1,300	0.18
S0115-SA10	3/8"	0.44"	0.65"	1.24"	1,500	0.31
S0115-SA12	7/16"	0.50"	0.75"	1.43"	2,000	0.50
S0115-SA13	1/2"	0.63"	0.79"	1.58"	3,000	0.74
S0115-SA16	5/8"	0.75"	1.05"	1.94"	4,000	1.41
S0115-SA20	3/4"	0.88"	1.20"	2.40"	6,000	2.36
S0115-SA22	7/8"	1.01"	1.45"	2.88"	8,000	3.46
S0115-SA25	1"	1.13"	1.67"	3.20"	10,000	4.85

NOTE:
1/A/W FED. SPECIFICATION RR-C-271D, TYPE IVB, CLASS 3, (EXCEPT 316 STAINLESS STEEL). MARKED TO THE NEAREST FRACTIONAL TON.

ROUND PIN CHAIN SHACKLE



316-NM STAINLESS STEEL WITH OVERSIZE ROUND PIN



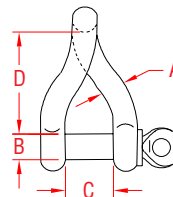
ITEM	A	B	C	D	WLL	WT
	(size)				(lb)	(lb)
S0115-RP07	1/4"	0.32"	0.46"	0.87"	1,000	0.09
S0115-RP08	5/16"	0.37"	0.52"	1.02"	1,300	0.16
S0115-RP10	3/8"	0.44"	0.65"	1.24"	1,500	0.28
S0115-RP12	7/16"	0.50"	0.75"	1.43"	2,000	0.43
S0115-RP13	1/2"	0.63"	0.79"	1.58"	3,000	0.70
S0115-RP16	5/8"	0.75"	1.05"	1.94"	4,000	1.70
S0115-RP20	3/4"	0.88"	1.20"	2.40"	6,000	2.13
S0115-RP22	7/8"	1.00"	1.45"	2.88"	8,000	3.22
S0115-RP25	1"	1.13"	1.67"	3.20"	10,000	4.77

NOTE:
1/A/W FED. SPECIFICATION RR-C-271D, TYPE IVB, CLASS 1, (EXCEPT 316 STAINLESS STEEL). MARKED TO THE NEAREST FRACTIONAL TON.

TWIST SHACKLE



316 STAINLESS STEEL WITH SCREW PIN

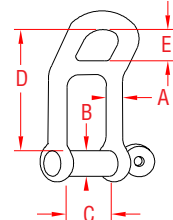


ITEM	A	B	C	D	WLL	WT
	(size)				(lb)	(lb)
S0163-0004	5/32"	0.16"	0.30"	0.63"	200	0.02
S0163-0005	3/16"	0.19"	0.38"	0.83"	500	0.04
S0163-0006	1/4"	0.23"	0.42"	1.00"	750	0.07
S0163-0008	5/16"	0.31"	0.55"	1.30"	1,000	0.16
S0163-0010	3/8"	0.38"	0.71"	1.80"	1,200	0.30
S0163-0012	1/2"	0.47"	0.78"	2.20"	1,500	0.51

HEADBOARD SHACKLE



316 STAINLESS STEEL WITH CAPTIVE PIN



ITEM	A	B	C	D	E	WLL	WT
	(size)					(lb)	(lb)
S0173-0006	1/4"	0.30"	0.48"	1.70"	0.44"	750	0.10
S0173-0008	5/16"	0.38"	0.63"	2.20"	0.58"	1,000	0.22
S0173-0010	3/8"	0.47"	0.78"	2.80"	0.74"	1,200	0.42
S0173-0012	1/2"	0.54"	0.94"	3.25"	0.88"	1,500	0.71

NOTE:
SCREW PIN IS CAPTIVE AND NOT REMOVABLE. WHEN IT'S FULLY OPENED, THE END OF THE PIN WILL SIT FLUSH WITH THE INSIDE OF THE SHACKLE.

LIMITED LIFETIME WARRANTY

SUNCOR STAINLESS

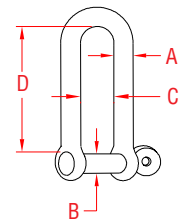
TEL 508-732-9191 • FAX 508-732-9798 • ORDERS ONLY 800-394-2222

www.suncorstainless.com

LONG D SHACKLE



**316 STAINLESS STEEL
WITH SCREW PIN**

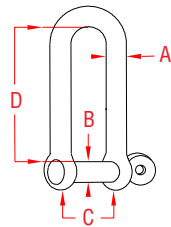


ITEM	A	B	C	D	WLL	WT
	(size)				(lb)	(lb)
S0138-0004	5/32"	0.15"	0.32"	1.19"	200	0.03
S0138-0005	3/16"	0.19"	0.43"	1.50"	500	0.05
S0138-0006	1/4"	0.23"	0.49"	1.74"	750	0.08
S0138-0008	5/16"	0.31"	0.68"	2.31"	1,000	0.18
S0138-0010	3/8"	0.38"	0.78"	2.88"	1,200	0.35
S0138-0012	1/2"	0.47"	0.93"	3.50"	1,500	0.62

LONG D SHACKLE



**316 STAINLESS STEEL
WITH CAPTIVE PIN**



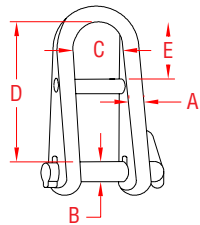
ITEM	A	B	C	D	WLL	WT
	(size)				(lb)	(lb)
S0138-CP04	5/32"	0.15"	0.30"	1.17"	200	0.03
S0138-CP05	3/16"	0.19"	0.39"	1.47"	500	0.05
S0138-CP06	1/4"	0.23"	0.46"	1.77"	750	0.08
S0138-CP08	5/16"	0.31"	0.61"	2.36"	1,000	0.18
S0138-CP10	3/8"	0.38"	0.78"	2.95"	1,200	0.34
S0138-CP12	1/2"	0.47"	0.93"	3.54"	1,500	0.57

NOTE:
SCREW PIN IS CAPTIVE AND NOT REMOVABLE. WHEN IT'S FULLY OPENED, THE END OF THE PIN WILL SIT FLUSH WITH THE INSIDE OF THE SHACKLE.

HALYARD SHACKLE



**STAINLESS STEEL
WITH KEY PIN**

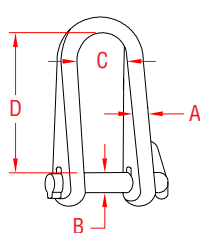


ITEM	A	B	C	D	E	WLL	WT
	(size)					(lb)	(lb)
316 STAINLESS STEEL							
S0164-0005	3/16"	0.20"	0.47"	1.48"	0.52"	500	0.07
S0164-0006	1/4"	0.24"	0.56"	1.70"	0.61"	750	0.11
S0164-0008	5/16"	0.31"	0.75"	2.37"	0.84"	1,000	0.25
						BL	(lb)
17-4 PH STAINLESS STEEL							
S0164-HR05	3/16"	0.20"	0.47"	1.48"	0.52"	2,500	0.07
S0164-HR06	1/4"	0.24"	0.56"	1.70"	0.61"	3,900	0.11
S0164-HR08	5/16"	0.31"	0.75"	2.37"	0.84"	5,000	0.25

LONG SHACKLE



**STAINLESS STEEL
WITH KEY PIN**

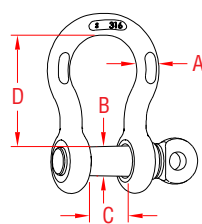


ITEM	A	B	C	D	WLL	WT	
	(size)				(lb)	(lb)	
316 STAINLESS STEEL							
S0167-0005	3/16"	0.20"	0.47"	1.43"	500	0.07	
S0167-0006	1/4"	0.24"	0.56"	1.70"	750	0.11	
S0167-0008	5/16"	0.31"	0.75"	2.30"	1,000	0.26	
						BL	
17-4 PH STAINLESS STEEL							
S0167-HR05	3/16"	0.20"	0.47"	1.43"	2,500	0.07	
S0167-HR06	1/4"	0.24"	0.56"	1.70"	3,900	0.11	
S0167-HR08	5/16"	0.31"	0.75"	2.30"	5,000	0.26	

ANCHOR SHACKLE



**316-NM STAINLESS STEEL
WITH OVERSIZE SCREW PIN**



ITEM	A	B	C	D	WLL	WT	
	(size)				(lb)	(lb)	
316-NM STAINLESS STEEL							
S0116-FS05	3/16"	0.26"	0.41"	0.83"	650	0.05	
S0116-FS07	1/4"	0.31"	0.47"	1.11"	1,000	0.10	
S0116-FS08	5/16"	0.38"	0.53"	1.20"	1,300	0.17	
S0116-FS10	3/8"	0.44"	0.66"	1.41"	1,500	0.30	
S0116-FS12	7/16"	0.50"	0.72"	1.77"	2,000	0.50	
S0116-FS13	1/2"	0.63"	0.82"	1.83"	3,000	0.71	
S0116-FS16	5/8"	0.75"	1.02"	2.41"	4,000	1.39	
S0116-FS20	3/4"	0.88"	1.25"	2.84"	6,000	2.31	
S0116-FS22	7/8"	1.00"	1.48"	3.30"	8,000	3.64	
S0116-FS25	1"	1.13"	1.70"	3.80"	10,000	5.18	
S0116-FS32	1-1/4"	1.38"	2.03"	4.69"	14,000	9.88	

NOTE: I/AW FED SPEC RR-C-271D, TYPE IVA, CLASS 2, EXCEPT 316 STAINLESS. MARKED TO THE NEAREST FRACTIONAL TON.



Key:



Made in USA



Drop Forged



Precision Machined



Wire Formed



Suncor Exclusive



Import



Precision Cast



Stamped



Load Rated



New Product

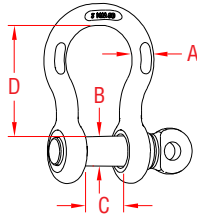
ORDERS ONLY: 800-394-2222 (USA)
877-495-5510 (CANADA)

All logos, icons, images, measurements and descriptions are the sole property of Suncor Stainless, Inc.
© 2013 Suncor Stainless, Inc.

US ANCHOR SHACKLE



316-NM STAINLESS STEEL WITH OVERSIZE SCREW PIN



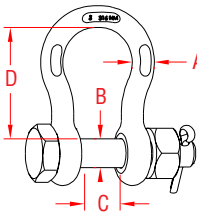
ITEM	A	B	C	D	WLL	WT
	(size)				(lb)	(lb)
S0116-FS07-US	1/4"	0.31"	0.47"	1.11"	1,000	0.10
S0116-FS08-US	5/16"	0.38"	0.53"	1.20"	1,300	0.17
S0116-FS10-US	3/8"	0.44"	0.66"	1.41"	1,500	0.30
S0116-FS12-US	7/16"	0.50"	0.72"	1.77"	2,000	0.50
S0116-FS13-US	1/2"	0.63"	0.82"	1.83"	3,000	0.71
S0116-FS16-US	5/8"	0.75"	1.02"	2.41"	4,000	1.39
S0116-FS20-US	3/4"	0.88"	1.25"	2.84"	6,000	2.31
S0116-FS22-US	7/8"	1.00"	1.48"	3.30"	8,000	3.64
S0116-FS25-US	1"	1.13"	1.70"	3.80"	10,000	5.18

NOTE:
1/A/W FED SPEC RR-C-271D, TYPE IVA, CLASS 2, EXCEPT 316 STAINLESS. MEETS ASME B30.26-2004 AMERICAN NATIONAL STANDARD. DFARS COMPLIANT SHACKLES. S0116-NM NITRONIC ANCHOR SHACKLES ALSO AVAILABLE.

BOLT ANCHOR SHACKLE



316-NM STAINLESS STEEL WITH OVERSIZE BOLT



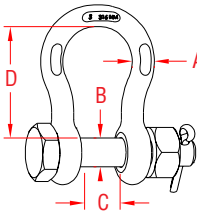
ITEM	A	B	C	D	WLL	WT
	(size)				(lb)	(lb)
S0116-SA07	1/4"	0.31"	0.47"	1.11"	1,000	0.12
S0116-SA08	5/16"	0.38"	0.53"	1.20"	1,300	0.18
S0116-SA10	3/8"	0.44"	0.66"	1.41"	1,500	0.35
S0116-SA12	7/16"	0.50"	0.72"	1.77"	2,000	0.57
S0116-SA13	1/2"	0.63"	0.82"	1.83"	3,000	0.84
S0116-SA16	5/8"	0.75"	1.02"	2.41"	4,000	1.64
S0116-SA20	3/4"	0.88"	1.25"	2.84"	6,000	2.75
S0116-SA22	7/8"	1.00"	1.48"	3.30"	8,000	4.18
S0116-SA25	1"	1.13"	1.70"	3.80"	10,000	5.61
S0116-SA32	1-1/4"	1.38"	2.03"	4.69"	14,000	9.88

NOTE:
1/A/W FED SPEC RR-C-271D, TYPE IVA, CLASS 3, EXCEPT 316 STAINLESS. MARKED TO THE NEAREST FRACTIONAL TON.

US BOLT ANCHOR SHACKLE



316-NM STAINLESS STEEL WITH OVERSIZE BOLT



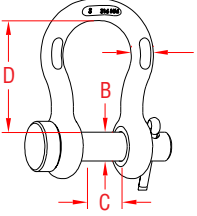
ITEM	A	B	C	D	WLL	WT
	(size)				(lb)	(lb)
S0116-SA07-US	1/4"	0.31"	0.47"	1.11"	1,000	0.12
S0116-SA08-US	5/16"	0.38"	0.53"	1.20"	1,300	0.18
S0116-SA10-US	3/8"	0.44"	0.66"	1.41"	1,500	0.35
S0116-SA12-US	7/16"	0.50"	0.72"	1.77"	2,000	0.57
S0116-SA13-US	1/2"	0.63"	0.82"	1.83"	3,000	0.84
S0116-SA16-US	5/8"	0.75"	1.02"	2.41"	4,000	1.64
S0116-SA20-US	3/4"	0.88"	1.25"	2.84"	6,000	2.75
S0116-SA22-US	7/8"	1.00"	1.48"	3.30"	8,000	4.18
S0116-SA25-US	1"	1.13"	1.70"	3.80"	10,000	5.61
S0116-SA32-US	1-1/4"	1.38"	2.03"	4.69"	14,000	9.88

NOTE:
1/A/W FED SPEC RR-C-271D, TYPE IVA, CLASS 3, EXCEPT 316 STAINLESS. MARKED TO THE NEAREST FRACTIONAL TON.

ROUND PIN ANCHOR SHACKLE



316-NM STAINLESS STEEL WITH OVERSIZE ROUND PIN



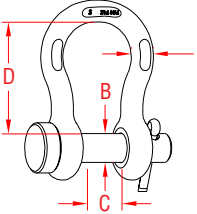
ITEM	A	B	C	D	WLL	WT
	(size)				(lb)	(lb)
S0116-RP07	1/4"	0.31"	0.47"	1.11"	1,000	0.10
S0116-RP08	5/16"	0.38"	0.53"	1.20"	1,300	0.17
S0116-RP10	3/8"	0.44"	0.66"	1.41"	1,500	0.32
S0116-RP12	7/16"	0.50"	0.72"	1.77"	2,000	0.49
S0116-RP13	1/2"	0.63"	0.82"	1.83"	3,000	0.72
S0116-RP16	5/8"	0.75"	1.02"	2.41"	4,000	1.53
S0116-RP20	3/4"	0.88"	1.25"	2.84"	6,000	2.36
S0116-RP22	7/8"	1.00"	1.48"	3.30"	8,000	4.00
S0116-RP25	1"	1.13"	1.70"	3.80"	10,000	5.27
S0116-RP32	1-1/4"	1.38"	2.03"	4.69"	14,000	9.88

NOTE:
1/A/W FEDERAL SPECIFICATION RR-C-271D, TYPE IVA, CLASS 1, EXCEPT 316 STAINLESS. MARKED TO THE NEAREST FRACTIONAL TON.

US ROUND PIN ANCHOR SHACKLE



316-NM STAINLESS STEEL WITH OVERSIZE ROUND PIN



ITEM	A	B	C	D	WLL	WT
	(size)				(lb)	(lb)
S0116-RP07-US	1/4"	0.31"	0.47"	1.11"	1,000	0.10
S0116-RP08-US	5/16"	0.38"	0.53"	1.20"	1,300	0.17
S0116-RP10-US	3/8"	0.44"	0.66"	1.41"	1,500	0.32
S0116-RP12-US	7/16"	0.50"	0.72"	1.77"	2,000	0.49
S0116-RP13-US	1/2"	0.63"	0.82"	1.83"	3,000	0.72
S0116-RP16-US	5/8"	0.75"	1.02"	2.41"	4,000	1.53
S0116-RP20-US	3/4"	0.88"	1.25"	2.84"	6,000	2.36
S0116-RP22-US	7/8"	1.00"	1.48"	3.30"	8,000	4.00
S0116-RP25-US	1"	1.13"	1.70"	3.80"	10,000	5.27
S0116-RP32-US	1-1/4"	1.38"	2.03"	4.69"	14,000	9.88

NOTE:
1/A/W FEDERAL SPECIFICATION RR-C-271D, TYPE IVA, CLASS 1, EXCEPT 316 STAINLESS. MARKED TO THE NEAREST FRACTIONAL TON.

LIMITED LIFETIME WARRANTY

SUNCOR STAINLESS

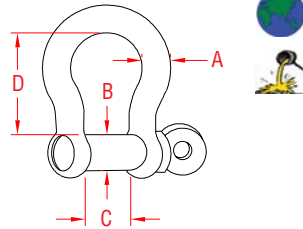
TEL 508-732-9191 • FAX 508-732-9798 • ORDERS ONLY 800-394-2222

www.suncorstainless.com

BOW SHACKLE



**316 STAINLESS STEEL
WITH SCREW PIN**

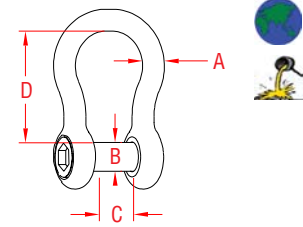


ITEM	A	B	C	D	WLL	WT
	(size)				(lb)	(lb)
S0116-0004	5/32"	0.16"	0.33"	0.75"	200	0.02
S0116-0005	3/16"	0.19"	0.43"	0.94"	500	0.04
S0116-0006	1/4"	0.23"	0.48"	1.08"	750	0.07
S0116-0008	5/16"	0.31"	0.67"	1.46"	1,000	0.16
S0116-0010	3/8"	0.39"	0.79"	1.77"	1,200	0.26
S0116-0012	15/32"	0.48"	0.94"	2.16"	1,500	0.50
S0116-0013	1/2"	0.51"	1.04"	2.33"	2,500	0.77
S0116-0016	5/8"	0.63"	1.25"	3.00"	3,000	1.21
S0116-0020	3/4"	0.74"	1.50"	3.34"	4,000	1.80
S0116-0022	7/8"	0.86"	1.72"	3.85"	5,000	2.90
S0116-0025	1"	0.96"	1.95"	4.42"	6,000	4.34
S0116-0032	1-1/4"	1.24"	2.50"	5.44"	9,000	9.02

BOW SHACKLE



**316 STAINLESS STEEL
WITH NO SNAG PIN**



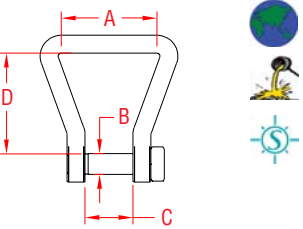
ITEM	A	B	C	D	WLL	WT
	(size)				(lb)	(lb)
S0116-NS06	1/4"	0.24"	0.47"	1.06"	750	0.06
S0116-NS08	5/16"	0.31"	0.67"	1.46"	1,000	0.16
S0116-NS10	3/8"	0.39"	0.79"	1.77"	1,200	0.26
S0116-NS12	15/32"	0.48"	0.94"	2.16"	1,500	0.46
S0116-NS13	1/2"	0.51"	1.04"	2.33"	2,500	0.70
S0116-NS16	5/8"	0.63"	1.25"	3.00"	3,000	1.13
S0116-NS20	3/4"	0.74"	1.50"	3.34"	4,000	1.75
S0116-NS22	7/8"	0.86"	1.72"	3.85"	5,000	2.85
S0116-NS25	1"	0.96"	1.95"	4.42"	6,000	4.30

NOTE:
NO SNAG PIN SITS FLUSH WITH BODY OF SHACKLE. LARGER SIZES WITH SLOTTED HEAD. SUNCOR RECOMMENDS THE USE OF A LOCKING FLUID WITH THIS TYPE OF SHACKLE.

WEBBING SHACKLE



316 STAINLESS STEEL



ITEM	A	B	C	D	WLL	WT
	(size)				(lb)	(lb)
S0231-0025	1"	0.19"	0.33"	1.14"	200	0.03

NOTE:
PATENTED "NO SNAG" DESIGN. CAN BE USED IN COMBINATION WITH WALL CLIP S0230-0000 ON PAGE 105: PIN FITS THROUGH HOLE IN CLIP. USE WITH FLAT WEB HOOK (SHOWN) OR WEBBING WITH SEWN LOOP (S0232-SERIES) ON PAGE 105. COMPATIBLE WITH SWIVEL PAD EYE.



SEIZING WIRE STAINLESS STEEL ANNEALED



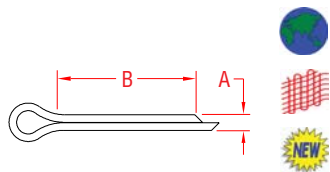
ITEM	A	B	WT
	(size)	(length)	(lb)
S0715-0020	0.020"	234'	0.27
S0715-0032	0.032"	92'	0.27
S0715-0041	0.041"	56'	0.27

NOTE:
USE SUNCOR'S QUALITY SEIZING WIRE TO KEEP SHACKLE PINS IN PLACE, AS SHOWN IN THE APPLICATION PHOTO TO THE LEFT.

COTTER PIN



316 STAINLESS STEEL



ITEM	A	B	WT
	(size)		(lb/100)
P0116-CT07	3/32"	0.75"	0.17
P0116-CT10	1/8"	0.75"	0.32
P0116-CT13	1/8"	1.13"	0.46
P0116-CT16	5/32"	1.75"	1.00
P0116-CT22	3/16"	1.50"	1.40
P0116-CT25	1/4"	1.75"	2.60

NOTE:
USED WITH ROUND PIN AND BOLT ANCHOR AND CHAIN SHACKLES.



Key:



Made in USA



Drop Forged



Precision Machined



Wire Formed



Suncor Exclusive



Import



Precision Cast



Stamped



Load Rated



New Product

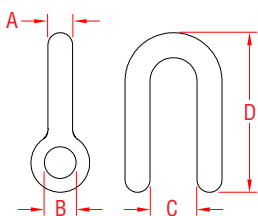
ORDERS ONLY: 800-394-2222 (USA)
877-495-5510 (CANADA)

All logos, icons, images, measurements and descriptions are the sole property of Suncor Stainless, Inc.
© 2013 Suncor Stainless, Inc.

CHAIN SHACKLE BODY



316-NM STAINLESS STEEL



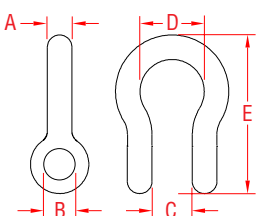
ITEM	A	B	C	D	WLL	WT
	(size)				(lb)	(lb)
P0115-BD07	1/4"	0.33"	0.47"	1.59"	1,000	0.05
P0115-BD08	5/16"	0.40"	0.53"	1.88"	1,500	0.09
P0115-BD10	3/8"	0.46"	0.66"	2.28"	2,000	0.18
P0115-BD12	7/16"	0.52"	0.75"	2.66"	3,000	0.25
P0115-BD13	1/2"	0.65"	0.81"	2.99"	4,000	0.38
P0115-BD16	5/8"	0.77"	1.06"	3.68"	6,000	0.77
P0115-BD20	3/4"	0.90"	1.25"	4.46"	8,000	1.27
P0115-BD22	7/8"	1.02"	1.44"	5.28"	10,000	2.07
P0115-BD25	1"	1.15"	1.69"	5.94"	12,000	2.92

NOTE:
UNTHREADED SHACKLE BODY. MARKED TO THE NEAREST FRACTIONAL TON.

ANCHOR SHACKLE BODY



316-NM STAINLESS STEEL



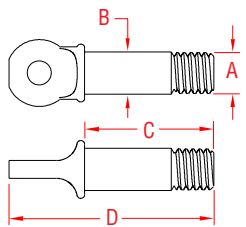
ITEM	A	B	C	D	E	WLL	WT
	(size)					(lb)	(lb)
P0116-BD07	1/4"	0.33"	0.47"	0.78"	1.84"	1,000	0.07
P0116-BD08	5/16"	0.40"	0.53"	0.84"	2.09"	1,300	0.11
P0116-BD10	3/8"	0.46"	0.66"	1.00"	2.49"	1,500	0.20
P0116-BD12	7/16"	0.52"	0.75"	1.16"	2.98"	2,000	0.29
P0116-BD13	1/2"	0.65"	0.81"	1.31"	3.28"	3,000	0.43
P0116-BD16	5/8"	0.77"	1.06"	1.69"	4.19"	4,000	0.88
P0116-BD20	3/4"	0.90"	1.25"	2.00"	4.92"	6,000	1.46
P0116-BD22	7/8"	1.02"	1.44"	2.28"	5.72"	8,000	2.26
P0116-BD25	1"	1.15"	1.69"	2.69"	6.50"	10,000	3.27
P0116-BD32	1-1/4"	1.42"	2.06"	3.33"	7.89"	14,000	6.80

NOTE:
UNTHREADED SHACKLE BODY. MARKED TO THE NEAREST FRACTIONAL TON.

US SHACKLE PIN



MADE IN USA
316-NM STAINLESS STEEL



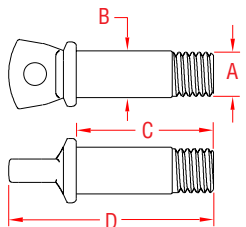
ITEM	SIZE	A	B	C	D	WLL	WT
						(lb)	(lb)
P0116-US07	1/4"	5/16"- 18	0.31"	0.98"	1.55"	1,000	0.03
P0116-US08	5/16"	3/8"- 16	0.38"	1.16"	1.84"	1,300	0.05
P0116-US10	3/8"	7/16"- 14	0.44"	1.43"	2.20"	1,500	0.09
P0116-US12	7/16"	1/2"- 13	0.50"	1.64"	2.50"	2,000	0.12
P0116-US13	1/2"	5/8"- 11	0.63"	1.82"	2.85"	3,000	0.22
P0116-US16	5/8"	3/4"- 10	0.75"	2.33"	3.40"	4,000	0.41
P0116-US20	3/4"	7/8"- 9	0.88"	2.80"	3.87"	6,000	0.61
P0116-US22	7/8"	1"- 8	1.00"	3.21"	4.70"	8,000	0.91
P0116-US25	1"	1-1/8"- 7	1.13"	3.70"	5.35"	10,000	1.37
P0116-US32	1-1/4"	1-3/8"- 6	1.38"	4.54"	6.65"	14,000	2.59

NOTE:
REPLACEMENT PIN. COMPATIBLE WITH CHAIN SHACKLES (S0115-FS, PAGE 5) AND ANCHOR SHACKLES (S0116-FS, PAGE 7).

SHACKLE PIN



IMPORT
316-NM STAINLESS STEEL



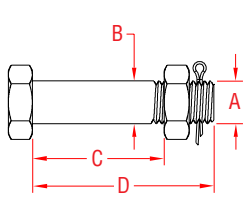
ITEM	SIZE	A	B	C	D	WLL	WT
						(lb)	(lb)
P0116-PN07	1/4"	5/16"- 18	0.31"	0.98"	1.55"	1,000	0.03
P0116-PN08	5/16"	3/8"- 16	0.38"	1.16"	1.84"	1,300	0.05
P0116-PN10	3/8"	7/16"- 14	0.44"	1.43"	2.20"	1,500	0.09
P0116-PN12	7/16"	1/2"- 13	0.50"	1.64"	2.50"	2,000	0.12
P0116-PN13	1/2"	5/8"- 11	0.63"	1.82"	2.85"	3,000	0.22
P0116-PN16	5/8"	3/4"- 10	0.75"	2.33"	3.40"	4,000	0.41
P0116-PN20	3/4"	7/8"- 9	0.88"	2.80"	3.87"	6,000	0.61
P0116-PN22	7/8"	1"- 8	1.00"	3.21"	4.70"	8,000	0.91
P0116-PN25	1"	1-1/8"- 7	1.13"	3.70"	5.35"	10,000	1.37
P0116-PN32	1-1/4"	1-3/8"- 6	1.38"	4.54"	6.65"	14,000	2.59

NOTE:
REPLACEMENT PIN. COMPATIBLE WITH CHAIN SHACKLES (S0115-FS, PAGE 5) AND ANCHOR SHACKLES (S0116-FS, PAGE 7).

SHACKLE BOLT



316-NM STAINLESS STEEL



ITEM	SIZE	A	B	C	D	WLL	WT
						(lb)	(lb)
S0116-KT07	1/4"	5/16"- 18	0.31"	0.94"	1.38"	1,000	0.05
S0116-KT08	5/16"	3/8"- 16	0.38"	1.00"	1.56"	1,300	0.07
S0116-KT10	3/8"	7/16"- 14	0.44"	1.38"	2.00"	1,500	0.09
S0116-KT12	7/16"	1/2"- 13	0.50"	1.61"	2.30"	2,000	0.12
S0116-KT13	1/2"	5/8"- 11	0.63"	1.69"	2.50"	3,000	0.18
S0116-KT16	5/8"	3/4"- 10	0.75"	2.13"	3.19"	4,000	0.56
S0116-KT20	3/4"	7/8"- 9	0.88"	2.63"	3.69"	6,000	0.91
S0116-KT22	7/8"	1"- 8	1.00"	3.13"	4.25"	8,000	1.36
S0116-KT25	1"	1-1/8"- 7	1.13"	3.50"	4.69"	10,000	2.11
S0116-KT32	1-1/4"	1-3/8"- 6	1.38"	3.65"	6.40"	14,000	4.12

NOTE:
REPLACEMENT BOLT. COMPATIBLE WITH CHAIN (P0115-BD, ABOVE) & ANCHOR (P0116-BD, ABOVE) SHACKLE BODIES. COTTER PIN AND NUT INCLUDED.

LIMITED LIFETIME WARRANTY

SUNCOR STAINLESS

TEL 508-732-9191 • FAX 508-732-9798 • ORDERS ONLY 800-394-2222

www.suncorstainless.com